

About Us

Equity Learning Academy (ELA) is a subsidiary of Shekinah Mentors International Initiative, a non-governmental organization (NGO).

The organization aims to expand access to education for marginalized children in rural communities in Nigeria, from kindergarten through secondary education.

The organization's overriding goal is to transform the lives of children in rural communities in Africa by providing equal opportunities for them, regardless of their background or socioeconomic status.

Through our educational programs, we strive to create a brighter future for each student who walks through our doors.

Contact Information

For more information or inquiries, do not hesitate to get in touch with us at:

(281) 569-9481 or (504) 339-4519

info@scheikiment.org



<https://scheikiment.org/donation>



EQUITY LEARNING

A c a d e m y

Ewatto, Nigeria



1 Equity Road, Idimu-Iyasele,
Ewatto Edo state, Nigeria
281 569 9484

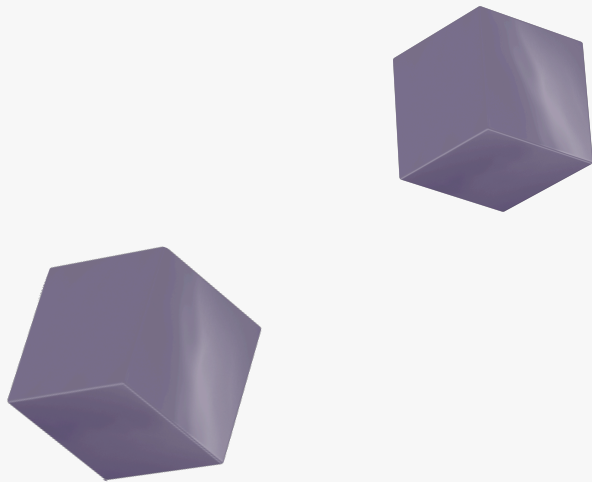
INFO@SCHEKIMENT.ORG

New Initiative

We are excited to announce an ambitious project to build a new school in Ewatto, Nigeria, and we need your support to make it a reality.

The children of Ewatto have tremendous potential, but they are currently held back by inadequate educational facilities.

Our goal is to provide them with a safe, well-equipped environment where they can learn, grow, and thrive.



Fundraising Initiatives

To realize our mission, we are raising funds for our very first model school, Equity Learning Academy, in Ewatto, Edo State, Nigeria. Your donation will assist in the following areas:

Borehole: Constructing a borehole that will provide a reliable and sustainable source of water for the school. This will not only enhance the overall hygiene and sanitation, but also ensure that students have access to clean water throughout the day.

Solar Panels: Installation of solar power to ensure a constant supply of electricity to the school. This will improve the lighting in the classrooms and provide access to modern amenities such as computers, projectors, and audio-visual aids.

Starlink Internet: This will provide internet connectivity that will enable our students to access online resources, participate in virtual classrooms, and stay updated with the latest information and technologies.

Playground Equipment: This will help construct a playground for students to engage in physical activities, develop social skills, and promote the overall well-being of the students.

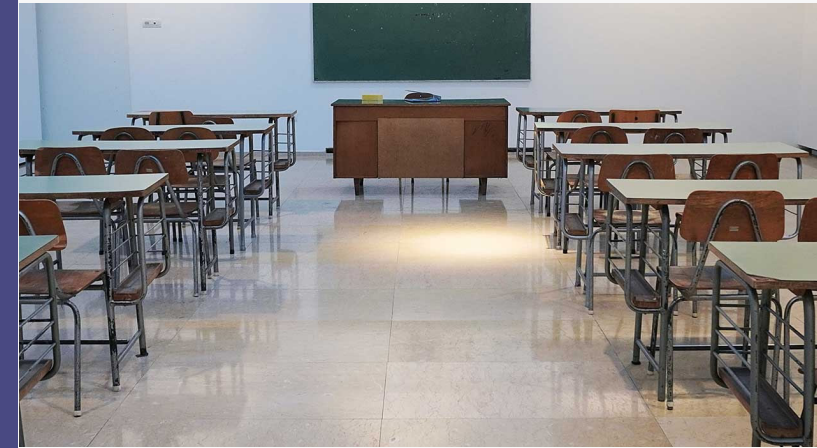
Kitchen Equipment: We plan to build a model kitchen to provide our students with nutritious meals.

School Van: To facilitate the daily transportation of students to and from school.

Football Field: To provide a suitable football field that can empower the students to engage in physical activities, develop essential skills, and cultivate a love for sports.

Our Mission

Our mission at Equity Learning Academy (ELA) is to ensure that rural kids have access to quality education that will enhance their knowledge, skills, and abilities to succeed in the future and become competitive in the educational and economic spheres.



To donate, please visit our donation page at:

<https://schekiment.org/donation>

Together, we can build a model school that meets the needs of students and staff while fostering a successful learning environment.

INFO@SCHEKIMENT.ORG